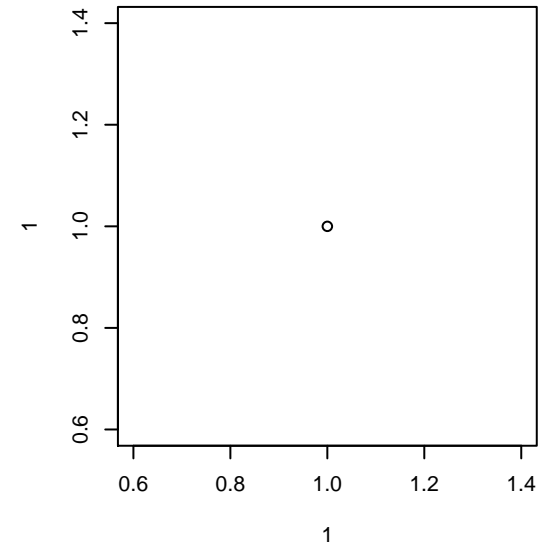


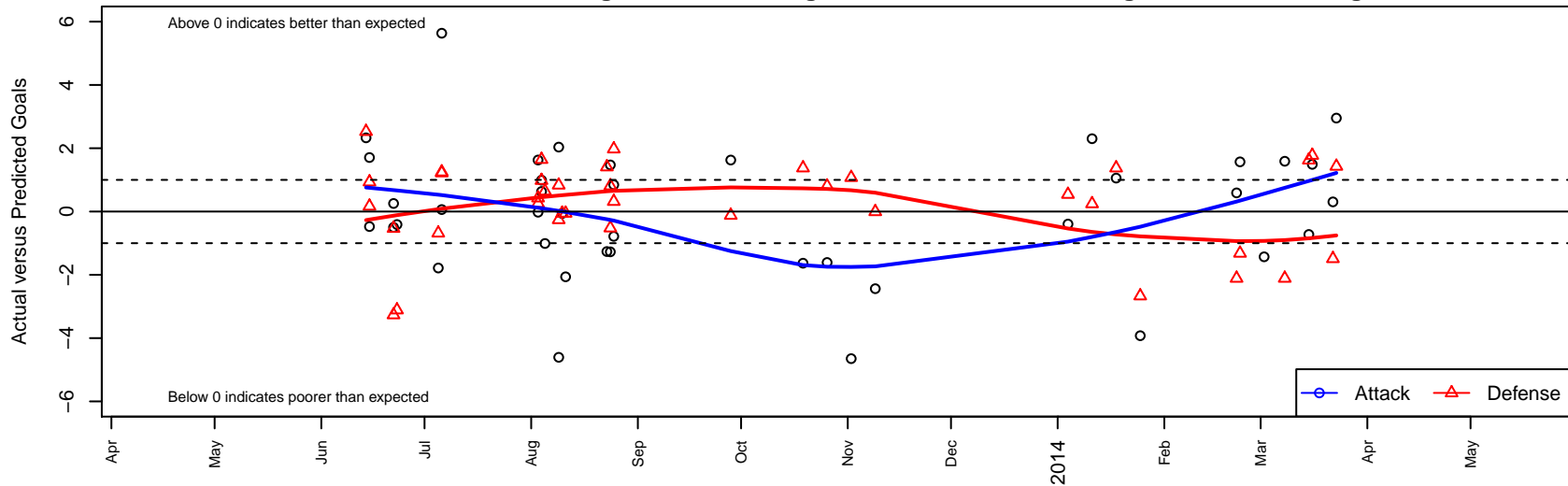
Tacoma United San Martin B01

Tacoma United FC
 Tacoma, WA
 B01 total strength=787
 attack=1.65 defense=0.55
 fall league = DIII B12D1, Spr PSPL Super League
 alt names used:
 Tac United San Marin
 TACOMA UNITED FC SAN MARTIN (WA)
 Tac United San Martin
 Tac United San Martin [B01]
 San Martin
 Tacoma United [San Martin]
 BU12 San Martin
 Tacoma United San Martin
 BU-11 SAN MARTIN [B01]

Venues played:
 Rainier Challenge Samba U12
 US Club Regionals Premier U11
 Sounders FC Cup BU12
 SeaTac Cup U12 U12
 River Jam Samba U12
 Xtreme Cup BU12
 DIII B12D1
 Founders Cup B01
 Spr PSPL Super League U12



Tacoma United San Martin B01
 Dots are actual minus expected GF (blue circles) and GA (red triangles).
 Blue line is smoothed change in attack strength. Red is smoothed change in defense strength.



| | date | home | | away | | venue | pred.home | pred.away |
|-------|------------|-------------------------------|----|------------------------------|----|---------------------------|-----------|-----------|
| 25331 | 2014-03-23 | Sting SC Valencia B01 | 1 | Tacoma United San Martin B01 | 5 | Spr PSPL Super League U12 | 2.43 | 2.05 |
| 25185 | 2014-03-22 | Cobra Aguilitas B01 | 4 | Tacoma United San Martin B01 | 2 | Spr PSPL Super League U12 | 2.51 | 1.69 |
| 24941 | 2014-03-16 | Tacoma United San Martin B01 | 3 | Central WA SA Grey B01 | 2 | Spr PSPL Super League U12 | 1.51 | 3.77 |
| 24614 | 2014-03-15 | Tacoma United San Martin B01 | 1 | XiFA 2020 B01 | 1 | Spr PSPL Super League U12 | 1.72 | 2.63 |
| 23952 | 2014-03-08 | Tynecastle FC B01 | 6 | Tacoma United San Martin B01 | 3 | Spr PSPL Super League U12 | 3.89 | 1.41 |
| 23704 | 2014-03-02 | NW United Youngsman B01 | 10 | Tacoma United San Martin B01 | 0 | Spr PSPL Super League U12 | 2.68 | 1.43 |
| 23243 | 2014-02-23 | Tacoma United San Martin B01 | 3 | NW United Youngsman B01 | 4 | Spr PSPL Super League U12 | 1.43 | 2.68 |
| 22979 | 2014-02-22 | Tacoma United San Martin B01 | 2 | Tynecastle FC B01 | 6 | Spr PSPL Super League U12 | 1.41 | 3.89 |
| 21709 | 2014-01-25 | Tacoma United San Martin B01 | 0 | Kent United Green B01 | 4 | Founders Cup B01 | 3.92 | 1.33 |
| 21321 | 2014-01-18 | Tacoma United San Martin B01 | 4 | 3 Rivers Yakima Borges B01 | 1 | Founders Cup B01 | 2.94 | 2.38 |
| 21106 | 2014-01-11 | Crossfire Select Nakamura B01 | 1 | Tacoma United San Martin B01 | 6 | Founders Cup B01 | 1.24 | 3.70 |
| 20901 | 2014-01-04 | Seattle United NE White B01 | 0 | Tacoma United San Martin B01 | 6 | Founders Cup B01 | 0.54 | 6.40 |
| 17650 | 2013-11-09 | Vashon Wolves B01 | 1 | Tacoma United San Martin B01 | 5 | DIII B12D1 | 0.99 | 7.44 |
| 16652 | 2013-11-02 | Tacoma United San Martin B01 | 1 | Nortac Arsenal B01 | 0 | DIII B12D1 | 5.65 | 1.07 |
| 15767 | 2013-10-26 | Tacoma United San Martin B01 | 3 | Norpoint B01 | 0 | DIII B12D1 | 4.61 | 0.80 |
| 14835 | 2013-10-19 | America FC B01 | 0 | Tacoma United San Martin B01 | 2 | DIII B12D1 | 1.38 | 3.63 |
| 11831 | 2013-09-28 | Highlands SC Terrana B01 | 1 | Tacoma United San Martin B01 | 5 | DIII B12D1 | 0.88 | 3.37 |
| 8376 | 2013-08-25 | NWN Red B02 | 0 | Tacoma United San Martin B01 | 4 | Xtreme Cup BU12 | 1.98 | 3.15 |
| 8378 | 2013-08-25 | Tacoma United San Martin B01 | 1 | Seattle United S Black B01 | 3 | Xtreme Cup BU12 | 1.78 | 3.32 |
| 7988 | 2013-08-24 | Seattle United W White B01 | 0 | Tacoma United San Martin B01 | 6 | Xtreme Cup BU12 | 0.81 | 4.53 |
| 7992 | 2013-08-24 | Tacoma United San Martin B01 | 7 | WS Thundebirds B01 | 1 | Xtreme Cup BU12 | 8.27 | 0.48 |
| 7671 | 2013-08-23 | Seattle United NE Blue B01 | 0 | Tacoma United San Martin B01 | 1 | Xtreme Cup BU12 | 1.41 | 2.26 |
| 6480 | 2013-08-11 | TUSK United B01 | 2 | Tacoma United San Martin B01 | 0 | River Jam Samba U12 | 1.94 | 2.06 |
| 6153 | 2013-08-10 | Tacoma United San Martin B01 | 2 | TUSK United B01 | 2 | River Jam Samba U12 | 2.06 | 1.94 |
| 5896 | 2013-08-09 | Tacoma United San Martin B01 | 2 | NWN Blue B01 | 1 | River Jam Samba U12 | 6.61 | 0.74 |
| 5898 | 2013-08-09 | WPFC Fury Black B01 | 0 | Tacoma United San Martin B01 | 11 | River Jam Samba U12 | 0.83 | 8.96 |
| 5836 | 2013-08-05 | Tacoma United San Martin B01 | 2 | Slammers Orange B01 | 1 | SeaTac Cup U12 U12 | 3.01 | 1.64 |
| 5683 | 2013-08-04 | Slammers Orange B01 | 0 | Tacoma United San Martin B01 | 4 | SeaTac Cup U12 U12 | 1.64 | 3.01 |

| | date | home | | away | | venue | pred.home | pred.away |
|------|-------------|------------------------------|---|------------------------------|----|-------------------------------|------------------|------------------|
| 5685 | 2013-08-04 | Harbor Premier Green B01 | 0 | Tacoma United San Martin B01 | 5 | SeaTac Cup U12 U12 | 0.98 | 4.37 |
| 5400 | 2013-08-03 | ISC Arsenal Red B01 | 0 | Tacoma United San Martin B01 | 10 | SeaTac Cup U12 U12 | 0.25 | 8.37 |
| 5402 | 2013-08-03 | Slammers White B01 | 0 | Tacoma United San Martin B01 | 7 | SeaTac Cup U12 U12 | 0.43 | 7.02 |
| 2586 | 2013-07-06 | Chilliwack FC 2002B | 2 | Tacoma United San Martin B01 | 2 | Sounders FC Cup BU12 | 3.22 | 1.94 |
| 2588 | 2013-07-06 | Tacoma United San Martin B01 | 7 | SSC Shadow A B01 | 3 | Sounders FC Cup BU12 | 1.37 | 4.25 |
| 2539 | 2013-07-05 | Seattle United S Black B01 | 4 | Tacoma United San Martin B01 | 0 | Sounders FC Cup BU12 | 3.32 | 1.78 |
| 1959 | 2013-06-23 | Tynecastle FC B01 | 7 | Tacoma United San Martin B01 | 1 | US Club Regionals Premier U11 | 3.89 | 1.41 |
| 1777 | 2013-06-22 | ISC Gunners A B01 | 5 | Tacoma United San Martin B01 | 1 | US Club Regionals Premier U11 | 4.47 | 0.75 |
| 1782 | 2013-06-22 | Tacoma United San Martin B01 | 0 | Eastside Timbers Red B01 | 11 | US Club Regionals Premier U11 | 0.50 | 7.73 |
| 1098 | 2013-06-15 | Tacoma United San Martin B01 | 0 | Crossfire Premier A B01 | 9 | Rainier Challenge Samba U12 | 0.47 | 9.17 |
| 1101 | 2013-06-15 | Tacoma United San Martin B01 | 3 | Crossfire Premier A B02 | 3 | Rainier Challenge Samba U12 | 1.29 | 3.93 |
| 929 | 2013-06-14 | WPFC Black B01 | 5 | Tacoma United San Martin B01 | 3 | Rainier Challenge Samba U12 | 7.53 | 0.67 |